

Typical Steel Corrugated Window Well Installation

Step 1: Inspect the window well

Look over the shape of your steel window well. It is sometimes possible to shape the window well if it looks distorted or slightly out of shape. Using a sledge hammer or any blunt tool, tap or push the sides in or out shaping the well making it symmetrical and aesthetically pleasing. This is also helpful in getting the desired window well cover overhang around the perimeter of the well.

Step 2: Fitting the cover

Set your new Ultra Protect basement window well cover over the top of the window well with the rear angle support facing up and the support bars underneath, flush against the concrete foundation or house wall and centered from side to side as shown in figure 1. The rear angle support should be setting on each side of the window well rim and hanging over each side a minimum of 1/2". If you have more it is ok, trimming instructions to follow. If you do not have enough overhang review step 1.

Step 3: Installing the rear support brackets (not included with all models)

Tip the cover up vertically and against the house (step 1) using the continuous rear angle as a straight edge. Using a pencil or marker, mark a reference line for the rear support bracket location and elevation (step 1) being careful not to install the bracket under a support bar or rivet allowing the angle to sit directly on the support bracket. Not all covers are equipped with these brackets, see the diagram on the back of this page for # of rear support brackets included for your window well cover model. With the bracket location marked hold the bracket in place and mark the top hole location. Drill the hole using a 5/32" masonry bit (step 2). Before drilling the second hole install the bracket with a blue concrete screw (step 3) using a 1/4" impact driver or wrench. (Caution: do not over tighten or it will snap off the blue screw.) Drill the second hole and install the remaining screw. Repeat this for any remaining brackets.



Figure 1

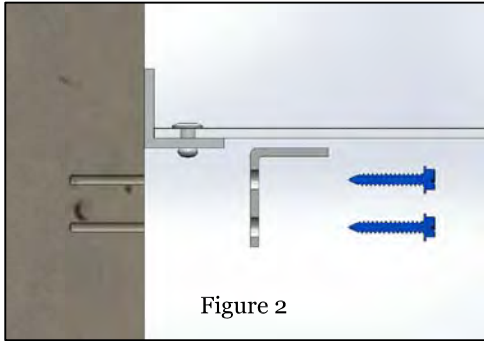


Figure 2



Step 1



Step 2



Step 3

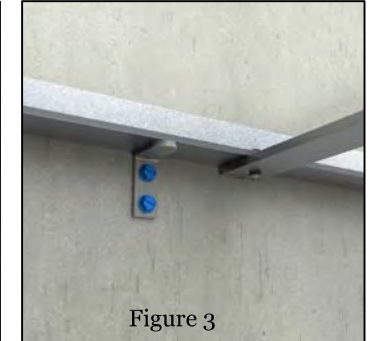


Figure 3

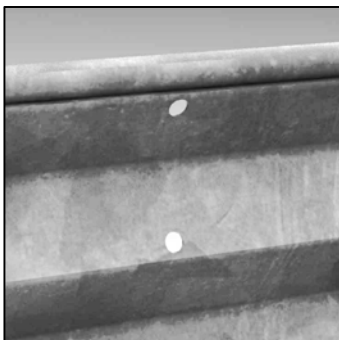
Step 4: Installing the "Safe-T Lock" locking brackets to the well

Each model window well cover has a different number of locking assemblies to install. See the diagram to the left of this page for recommended positioning for your model window well cover.

Hold each bracket in its desired location (example view 1a) (note: the hole locations of the locking bracket are slightly offset to allow for the thickness of the support bars. Although it is not critical, the end with slightly more space between the hole and the end should be considered the top) and mark the center of the two hole locations (note: for covers with aluminum support bars raise the bracket above the rim of the well 3/16". Models without support bars, mount brackets flush with the top of the well). Using a 5/16" drill bit, drill the 2 holes for each bracket thru the window well (example view 1b) (note: it can be helpful to dimple the center of each hole location using a punch or nail to help prevent the drill bit from walking). Next, install the locking brackets to the well using the 1/4-20 x 1 1/2" carriage bolts and 1/4-20 locknuts (example view 1c). After the brackets are secure, it is recommended to cut off any excess threads flush to the locknut and file smooth. See finished installation in example view 1d



example view 1a



example view 1b



example view 1c

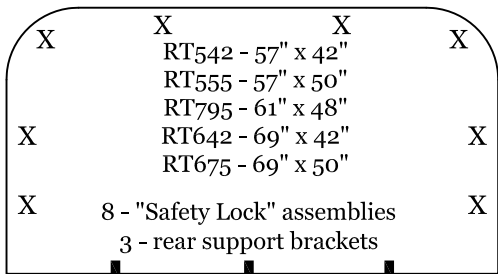
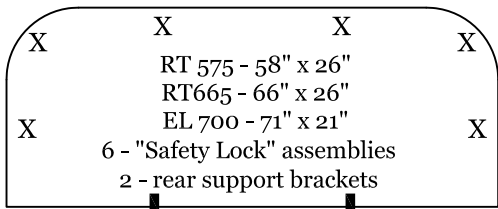
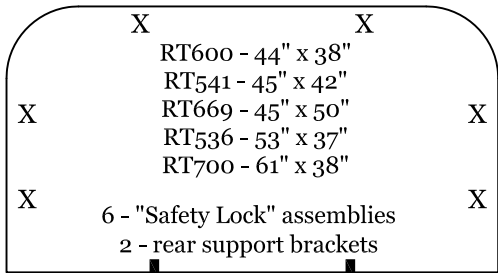
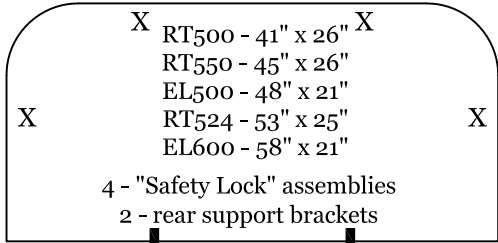
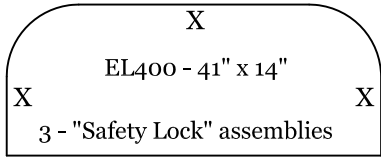
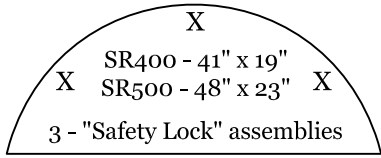


example view 1d



installed brackets

X = Locking Bracket Placement
 ■ = Rear Support Bracket Placement



Step 5: Installing the cover

With the locking brackets installed, position the cover back over the well being sure the cover is centered side to side. Using a 5/16" drill bit, drill a hole at each bracket location being sure to insert a locking clevis pin after drilling each hole. This will ensure that the cover will stay in position as you are drilling each hole location. With all the holes drilled and the pins in place it is time to decide if the cover fits or it needs to be cut to the profile of the well. If no cutting is needed finish the installation by going into your basement then into the window well to install the cotter pins, locking down your new Ultra Protect window well cover.



Step 6: Trimming the window well cover to the profile of your window well for a perfect fit.

Window wells come in all kinds of shapes and types and you would think it would be impossible to make a cover that would fit every one. But We Did!

With the cover in place and the clevis pins holding the cover in place, simply mask off the shape of the window well using 1" masking tape. Keeping the tape to the outer side of the well, apply the tape to shape the profile of the well. This will give the recommended overhang letting the water drip off the cover far enough outside the well not allowing the water to run in and drip inside the window well. The tape will also protect the plastic from being scratched while cutting. It can also be a good idea to add more tape to the cover where the saw table will be sitting on the cover to protect it during cutting.

The covers are protected with a protective film to reduce the chances of scuffing and scratching. When the installation is complete remove the film from the cover.